

# いちご 1

No. 213

Seika Town News and Events Guide January 2013

## Contents

もくじ  
目次

Important Information	
おもなじょうほう	2
General Information, Notice	
くらしのじょうほう	3
Upcoming Events	
こんげつのイベント	4,5,6
Cooking	
クッキング	7
Transportation to Kansai Airport	
かんさいくこうまでのこうつう	7
Giseigo Corner	
ぎせいごコーナー	7
Note from the Editor	
へんしゅうしゃのことば	7
Festivals & National Holidays	
さいじつ・ぎょうじ	8
Seika Growth Watch	
じんこうのうごき	8
Ichigo Corner/Aim	
いちごコーナー/もくてき	8

### Published By:

Seika Town Office Department of  
General Affairs, Planning and  
Coordinating Division

〒619-0285

70 Kitajiri Minamiayazuma

Seika-cho, Soraku-gun, Kyoto-fu  
せいかちょうやくばそうむぶきかくちょうせい  
精華町役場総務部企画調整課

〒619-0285

きょうとふそうらくぐんせいかちょうみなみあやづま  
京都府相楽郡精華町南稲八妻  
きたじり  
北尻70

Tel. 0774-95-1900

Fax. 0774-95-3971

Email: cir@town.seika.kyoto.jp

## Happy New Year from the Mayor of Seika

せいかちょうちょう しんねん  
精華町 長の新年あいさつ

Happy New Year!

Looking back at 2012, I feel that the heavy rain, 107 millimeters in one hour, recorded on August 14<sup>th</sup> was truly an instance of abnormal weather. This year will mark the 60<sup>th</sup> anniversary of the Minamiyamashiro Floods of 1953, which flooded the Kizu River between August 14<sup>th</sup> and 16<sup>th</sup> of that year.

Our ancestors left us with the warning, "Disasters come when forgotten." Now more than ever, the importance of helping oneself, helping others, and receiving help from the authorities is clear. We must work to prevent further disasters.

On a brighter note, our fire department received the prestigious "Matoi" award, and also won at the Kyoto Prefectural Firefighting Competition. Furthermore, with support from the local community, Seika elementary school students achieved a large number of accomplishments in fields such as education, culture, and sports.

Meanwhile, this year marked the start of the "Fifth Town of Seika Comprehensive Plan," which incorporates the opinions and proposals of the people of Seika. This plan articulates a vision for Seika 10 years from now to become "Seika, a Science City Where People Grow and the Future Unfolds." Although Seika is falling on hard times financially, we will work hand-in-hand with the people and organizations of Seika in order to guarantee a town where safety, peace of mind, and life are protected.

Finally, I would like to wish all the residents of Seika happiness, health, and a wonderful new year.



Kaname Kimura, Mayor of Seika

## Important Information

## おもなじょうほう

## Ready, Set, Strawberries! いちご狩りがスタート!

Seika's strawberry gardens will be open starting in January! If you want to pick some strawberries, check out the information below.

## Hanayagi Tourist Farm

## ▼Dates

- ①Wednesdays, Saturdays, and Sundays from Saturday, January 12<sup>th</sup> to Wednesday, February 27<sup>th</sup>  
Starting at 10:30 and 13:00
- ②Tuesdays, Wednesdays, Saturdays, and Sundays from Friday, March 1<sup>st</sup> to Monday, May 6<sup>th</sup> (holiday)  
Starting at 10:30, 13:00, and 15:00
- ③Tuesdays, Wednesdays, Saturdays, and Sundays from Tuesday, May 7<sup>th</sup> to Wednesday, May 29<sup>th</sup>  
Starting at 10:30, 13:00, and 15:00

## ▼Fee

- ①Middle schoolers and above: ¥1,500  
Elementary schoolers: ¥1,300  
Age 3+ (not yet in school): ¥1,000
- ②Middle schoolers and above: (weekdays) ¥1,300  
(weekends and holidays) ¥1,400  
Elementary schoolers: ¥1,200  
Age 3+ (not yet in school): ¥1,000
- ③Middle schoolers and above: (weekdays) ¥1,100  
(weekends and holidays) ¥1,200  
Elementary schoolers: ¥1,000  
Age 3+ (not yet in school): ¥800
- ※Discounts are available for groups of 20 or more and for persons with disabilities. Please inquire for further details.

## ▼When to Apply

Within a month before the desired date  
Hours: 8:00-17:00

## ▼How to Apply

Please call or fax the following numbers. You may also apply online (<http://www.hanayagifarm.com/>).

## ○Applications/Questions

Hanayagi Tourist Farm  
TEL: 0774-93-4811 FAX: 0774-93-4822

## Kawanishi Strawberry Gardens

## ▼Dates

Weekends and holidays from Saturday, January 19<sup>th</sup> to Sunday, February 17<sup>th</sup>; every day from Monday, February 18<sup>th</sup> to Sunday, May 26<sup>th</sup>  
10:00-16:00

## ▼Fee

- ◆Weekdays  
Middle schoolers and above: ¥1,200  
Elementary schoolers: ¥1,000  
Age 3+ (not yet in school): ¥700
- ◆Weekends and Holidays  
Middle schoolers and above: ¥1,400  
Elementary schoolers: ¥1,200  
Age 3+ (not yet in school): ¥900
- ※One hour per person  
※Discounts are available for groups of 20 or more, but discounts will not be effective if more than half of the group is made up of children 2 or below.

## ▼When to Apply

Within a month before the desired date  
Hours: 9:00-16:00

## ▼How to Apply

Please call or fax the following numbers.

## ○Applications/Questions

- ◆Until Friday, February 15<sup>th</sup>  
Nagashima Residence  
TEL: 0774-94-2568 FAX: 0774-94-5260
- ◆After Saturday, February 16<sup>th</sup>  
Kawanishi Strawberry Gardens  
TEL: 0774-94-5230 FAX: 0774-94-5260

## General Information

## くらしのじょうほう

## January

Date	Time	What	Where
4 (Fri)		Mukunoki Center Closed	
9 (Wed)	13:00~15:30	Parenting Class – Eating	Health Center
11 (Fri)	19:30~21:00	International Education Lecture Series: “The Real America”	Seika Town Office 201 (2F)
14 (Mon/holiday)	13:30~15:45	2013 Seika Coming of Age Ceremony	Keihanna Plaza Main Hall
15 (Tue)	13:30~15:00	Training Room Orientation	Mukunoki Center
17 (Thu)	13:00~	Dental Checkup for 2-year-olds	Health Center
18 (Fri)	13:00~	Checkup for 18-month-olds	Health Center
23 (Wed)	13:00~	Checkup for 3-and-a-half-year-olds	Health Center
”		Mukunoki Center Closed	
27 (Sun)	14:00~17:00	9 <sup>th</sup> Cross-Cultural Forum	Seika Hall (Town Office 2 <sup>nd</sup> Floor)
28 (Mon)	13:30~15:00	Training Room Orientation	Mukunoki Center
29 (Tue)	13:00~	Checkup for 9- to 10-month-olds	Health Center
30 (Wed)	13:00~	Checkup for 3- to 4-month-olds	Health Center
”	13:15~14:15	Tuberculosis Vaccinations	Health Center

### What to do if...

#### You have a question about something in Ichigo:

Call Steven Pelcovits, Coordinator for International relations at the Seika Town Office. You may also call if you need an interpreter, as most of the events and classes in Ichigo will be in Japanese.

#### You have a problem with life in Japan:

If you have any questions or problems concerning life in Japan not related to an article in Ichigo, please first contact Steven Pelcovits, Coordinator for International relations at the Seika Town Office.

TEL : 0774-95-1900 FAX: 0774-95-3971 E-mail: cir@town.seika.kyoto.jp or kikaku@town.seika.kyoto.jp (Planning and Coordinating Division)

#### You have an issue with your visa or other questions:

The Kyoto Prefectural International Center, located on the 9th floor of Kyoto Station, offers advice and consultation on visa issues and general problems. Visa consultations are available on the 4th Sunday of every month from 13:00-16:00. Please make a reservation beforehand by phone or from the center's homepage. General counseling is available in English (Monday and Tuesday), Spanish (Wednesday), Portuguese (Thursday), Tagalog (Thursday), Chinese (Friday) and Korean (Saturday) from 13:00 to 17:00.

TEL: 075-342-5000 Homepage: <http://www.kpic.or.jp/english/index.html>

## Upcoming Events

## こんげつのイベント

## Pick Strawberries and Cook Different Cuisines! Homestay in Seika

いちご狩りと、いろいろな国の料理づくり～精華町でホームステイ～

▼**WHEN:** Saturday, March 9<sup>th</sup> to Sunday, March 10<sup>th</sup>, 2013

※ The first day will be a cultural exchange program, while the second day will be spent with host families.

▼**WHO:** Foreign nationals living, working, or attending school in Kyoto Prefecture▼**LIMIT:** First 20 applicants▼**FEE:** ¥1,000 ※ Including strawberry garden entrance fee and lunch on the 9<sup>th</sup>▼**WHAT TO BRING:** Clothes and shoes that can get dirty and are easy to move around in▼**APPLICATION DEADLINE:** 17:00 on Friday, February 15<sup>th</sup>

Hours: Weekdays from 8:30 to noon and 13:00 to 17:00

▼**HOW TO APPLY:** Please send the following materials to the Seika Global Network Office (located inside the Seika Town Office Planning and Coordinating Division) by post, fax, or e-mail. Applications are available at the Planning and Coordinating Division, as well as the Kyoto Prefectural International Center. They may also be downloaded from the Seika Town Homepage.

- ・ Homestay Application Form
- ・ Copy of identification (Residency Certificate, Residence Card, Special Permanent Resident Certificate, Health Insurance Certificate, etc.)

▼**SPONSORS:** Kyoto Prefectural International Center, Town of Seika, Seika Global Network▼**PROGRAM:** <Saturday, March 9<sup>th</sup>>

10:00 Participants gather (Seika Town Office, North Entrance)

10:30 Strawberry picking (Kawanishi Strawberry Gardens) 30 minutes to 1 hour

11:30 Party (Mukunoki Center)

- ・ Make dishes from participants' home countries and cook with strawberries
- ・ Games and cultural exchange

15:00 Group presentation by host families; participants go home with host families

<Sunday, March 10<sup>th</sup>>

Free day with host families

Leave host families (evening)

▼**OTHER:** Event will be held rain or shine. No cancellations, please.**APPLICATIONS/QUESTIONS**

Seika Global Network Office (inside the Planning and Coordinating Division) 〒619-0285 (no address needed)

TEL: 0774-95-1900 FAX: 0774-95-3971 E-mail: kikaku@town.seika.kyoto.jp

## Keihanna Commemorative Park Upcoming Events and Activities

### けいはんな記念公園の催し物

**Mebuki Forest Rally (Winter): Befriending Wild Birds★芽ぶきのモリラリー【冬】～野鳥となかよくなろう～**

WHEN: Sunday, January 6<sup>th</sup> to Thursday, February 28<sup>th</sup> 9:00-17:00 (Check-in 9:00-16:00) WHERE: Suikeien Mebuki Forest WHAT: Come participate in a quiz. There will be prizes. FEE: Suikeien admission fee

**New Year Concert: Tsugaru Shamisen Melody★新春コンサート～津軽三味線の調べ～**

WHEN: Sunday, January 6<sup>th</sup> 14:00-15:00 WHERE: Suikeien Kangetsuro Basement Hall WHAT: Enjoy the sounds of the New Year, courtesy of the Iwa Shimizu group. FEE: Suikeien admission fee

**Jinjitsu: Seven-Herb Congee and Origami Crafts★人日の節句～七草粥のふるまいと折り紙でコマづくり～**

WHEN: Monday, January 7<sup>th</sup> 14:00-16:00 WHERE: Suikeien Kangetsuro Basement Hall WHAT: An event for Jinjitsu, one of the five *sekku* holidays. FEE: Suikeien admission fee

**Suikeien Flower Arrangement Class★水景園のいけばな教室**

WHEN: Thursday, January 10<sup>th</sup>; Thursday, January 24<sup>th</sup>; Thursday, February 7<sup>th</sup>; Thursday, February 21<sup>st</sup> 13:30-16:00 WHERE: Suikeien Kangetsuro Study Room WHAT: Come learn about the 500-year-old art of flower arrangement. FEE: ¥2,000 (please apply at least two days in advance)

**Children of the Mebuki Forest: Fun in the Forest★あつまれ！芽ぶきの森のこびとたち～森あそびの日～**

WHEN: Sunday, January 20<sup>th</sup> 13:00-16:00 (canceled in case of rain) WHERE: Suikeien Mebuki Forest WHAT: Come play in the forest! There will be swings, hammocks, and ropes to swing around on. FEE: ¥100 for general participation, ¥50 for elementary/middle school children (Suikeien admission fee separate)

**Baked Sweet Potato Bonfire★たき火で焼き芋を焼こう**

WHEN: Saturday, January 26<sup>th</sup> 13:00-16:00 (postponed to the following day in case of stormy weather) WHERE: Suikeien Yamatanada (meet in front of Suikeien reception area) WHAT: Come roast delicious sweet potatoes. FEE: ¥500 (reservations necessary, limit 100 people)

**Keihanna Commemorative Park Four Seasons Photo Exhibit★公園の写真展～けいはんな記念公園の春夏秋冬～**

WHEN: Saturday, January 26<sup>th</sup> to Sunday, February 24<sup>th</sup> 9:00-17:00 (9:00-16:00 on the 24<sup>th</sup>) WHERE: Suikeien Kangetsuro Tsuki no Niwa Gallery WHAT: Come enjoy pictures of the park from all four seasons. FEE: Suikeien admission fee

**Setsubun: Beans and Demons★節分～豆のふるまいと鬼のおはなし～**

WHEN: Sunday, February 3<sup>rd</sup> 13:00-15:00 WHERE: Suikeien Kangetsuro Basement Hall WHAT: Make masks and listen to folklore about the holiday. Bean-throwing will be available for the first 100 people to arrive. FEE: Suikeien admission fee

**PARK INFORMATION:** Entrance to Suikeien and Shizenrin: Adults: ¥200, Middle and E.S. students: ¥100 (Discount for groups of 25 or more)

**HOURS:** 09:00-17:00 ※Closed between Friday, December 28<sup>th</sup> and Friday, January 4<sup>th</sup>

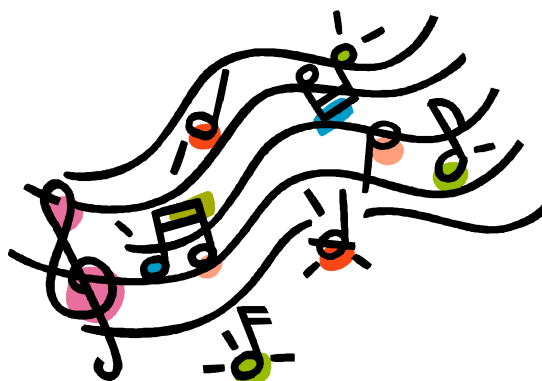
**QUESTIONS:** Keihanna Commemorative Park Mgmt. Office けいはんな記念公園管理事務所

TEL: 0774-93-1200, FAX: 0774-93-2688 <http://www.keihanna-park.jp>

## Acoustic Night with Shozo Ise, Hiromi Ota, and

Masumi Ono いせしょうぞう おおたひろみ おおのますみ  
伊勢正三・太田裕美・大野真澄

アコースティックナイト

**WHEN:** Sunday, March 3<sup>rd</sup> 17:00**WHERE:** Keihanna Plaza Main Hall**TICKETS:** ¥6,000

(all seats assigned; no admission for children below school age)

Tickets sold at reception window on third floor of Keihanna Plaza, weekdays 10:00-17:30

**SPONSOR:** Keihanna JMP**QUESTIONS:** Keihanna Convention Departmentけいはんなコンベンション事業部 じぎょうぶ TEL: 0774-95-5115

## Keihanna Plaza Upcoming Events

けいはんなプラザの催し物 もよおもの**Keihanna Movies** えいがげきじょう けいはんな映画劇場“Tenchi Meisatsu” てんちめいさつ 「天地明察」

(2012, Japan)

Yasui Santetsu is the son of an Edo Period family responsible for teaching the shogun how to play go. He is skilled at astronomy and arithmetic. However, when the shogun orders him to come up with a new calendar, he faces a great challenge.

**WHEN:**January 18<sup>th</sup> (Fri), 10:30, 14:00, 19:00January 19<sup>th</sup> (Sat), 10:30, 13:30, 16:30January 20<sup>th</sup> (Sun), 10:30, 13:30, 16:30**WHERE:** Keihanna Plaza Main Hall

General Admission.....¥1,000

J.H.S. students or younger.....¥700

Senior citizens aged 60 or older.....¥700

Keihanna Tomonokai Members.....¥700

**QUESTIONS:** Keihanna Convention Department,けいはんなコンベンション事業部 じぎょうぶ

TEL: 0774-95-5115

## Keihanna Plaza Petit Concert

けいはんなプラザプチコンサート

▼WHEN Every Wednesday 12:15-12:45 (except January 2<sup>nd</sup> and 9<sup>th</sup>) ▼WHERE Keihanna Plaza Atrium Lobby▼PROGRAM: ◆January 16<sup>th</sup>

Violin × Cello Duo Concert Halvorsen: Passacaglia based on themes from Handel, others

◆January 23<sup>rd</sup>

Piano Concert Chopin: Barcarole Op. 60, others

◆January 30<sup>th</sup>

The Seasons of Russia Tchaikovsky: Pieces from “The Seasons,” others

◆February 6<sup>th</sup>

Be Charmed by Brahms Brahms: Clarinet Trio Op. 114, others

QUESTIONS: Keihanna Plaza Petit Concert Committee じっこういいんかい けいはんなプラザプチコンサート実行委員会 TEL: 0774-95-5105



## Cooking

## クッキング

## Taro Potage

1. Boil the taro lightly so that it is still hard and peel the skin.
  2. Slice onion thinly.
  3. Add butter to pan and sauté onions on medium heat until soft.
  4. Add taro to (3) and sauté further, then add water and turn heat to high.
- When the water boils, return heat to medium and add consommé.
5. Boil the taro until soft, removing scum from the water along the way. Add milk.
  6. When (5) cools down somewhat, blend thoroughly, return to pan, heat and add salt to taste.
  7. Cut bread into 5-6mm squares and toast well in oven to make croutons. (Approximately 4 minutes at 200°C)
  8. Mix (7) with grated garlic.
  9. Ladle (6) into bowl and add (7) and parsley.

## Ingredients (Serves 2)

Taro	-----	120g
Onion	-----	40g
Water	-----	160g
Butter	-----	1.5g
Consommé	-----	1.5g
Milk	-----	160g
Bread (sliced into 10)	--	8g
Garlic	-----	2g
Salt	-----	0.2g
Parsley	-----	1g

## Giseigo Corner 擬声語コーナー

Hello and welcome to the Giseigo Corner! Giseigo are Japanese words describing sounds or conditions.

ぎせ いご
----------

さくさく

**Saku saku**

**“Sound of walking on snow”**

Now that winter is truly here, the season of snow is upon us. Whether in Seika or elsewhere, be sure to take full advantage of it.



## Transportation to Kansai Airport

### かんさいくこうまでのこうつう

#### Kansai Airport Bus

かんさいくこう  
関西空港エアポートリムジンバス

You can take the Nara Kotsu Airport Bus to Kansai International Airport from Keihanna Plaza, available seven days a week (one way fare ¥2000). Bookings are available. See the telephone number below to reserve a seat:

Departing	Arriving
5:50a.m.	7:30a.m.
6:50a.m.	8:25a.m.
7:50a.m.	9:30a.m.
9:50a.m.	11:30a.m.
10:50a.m.	12:30a.m.
11:50a.m.	1:30p.m.

Departing	Arriving
12:40p.m.	2:20p.m.
3:40p.m.	5:20p.m.
4:40p.m.	6:20p.m.
5:40p.m.	7:20p.m.
6:40p.m.	8:20p.m.

For more information or to reserve a seat:

Nara Kotsu Bus Reservation Center

ならこうつう  
奈良交通バス予約センター

TEL: 0742-22-5110 (Hours: 09:00 -19:00)

## Note from the Editor

### へんしゅうしゃのことば

Now that 2013 has arrived, many people are making New Year's resolutions. Back in college, I used to know people who would go to the gym regularly, and every January they would complain that the gym would become crowded due to people making New Year's resolutions to work out more. Fortunately for the regulars, those new people would usually give up within a week or two.

So, if you want to stick to your New Year's resolution, what can you do? Think of concrete ways to keep up. Make friends join you. Set repeating alarms. Most of all, even if it feels like a drag, always remember to keep on keeping on.

- Steven

Check out the Kyoto CIR blog!

<http://tabunkakyoito.wordpress.com/>

## Festivals and National Holidays さいじつ・ぎょうじ

## Coming of Age Day

せいじん ひ  
成人の日January 14<sup>th</sup>

This holiday celebrates those who have turned age 20, the official age of adulthood in Japan. Municipal governments all over Japan hold ceremonies involving speeches from officials followed by parties. Young women participating in the event often wear extremely elaborate kimono which can take hours to put on. Seika will hold its Coming of Age Ceremony this year at the Keihanna Plaza Main Hall.

## Igomori Festival

まつり  
いごもり祭January 18<sup>th</sup> – 20<sup>th</sup>

According to legend, the Igomori Festival was first held around the year 770 to ward off an evil spirit bringing plague and famine upon the locals. The festival begins when a huge torch is lit after dark at Hosono Shrine. The flaming torch, which weighs over 75 kilograms, is then paraded by six or seven men through the streets of Seika. Many food stands are set up around the shrine to add to the festive atmosphere. Residents of the area around Hosono Shrine also hold a tug-of-war competition, with the winning team being assured of a good harvest for the rest of the year.

**Directions (about 20 minutes):**

From Kintetsu Shin-Hosono/JR Hosono Station, go out the east exit, head straight down the street (east) and then turn left (north) at the end of the road. Turn right (east) at the first stoplight and follow the road as it winds northeast towards the Kizu River. Hosono Shrine will be at the end of the road.

## Setsubun

せつぶん  
節分February 3<sup>rd</sup>

Although the name of this holiday originally referred to the day before the start of any new season, it has come to describe the festival marking the beginning of spring. This festival is famous for the practice of *mamemaki*, or bean throwing, among families. One member of the family dresses up as an *oni* (demon) while the others throw roasted soybeans at that person and yell, "Oni wa soto! Fuku wa uchi!" meaning, "Demons out! Good fortune in!" Each person in the family then eats the number of beans corresponding to their respective ages. There will be a Setsubun event at Keihanna Commemorative Park on the day of the festival. Please see Page 5 for details.

**Seika Population Growth**じんこう うご  
人口の動き

Population as of December 1st:  
(Number in parentheses is change from last month)

<b>Total:</b>	<b>36,990 (+14)</b>
<b>Male:</b>	<b>17,838 (+8)</b>
<b>Female:</b>	<b>19,152 (+6)</b>
<b>Households:</b>	<b>13,775 (+18)</b>

**Ichigo Corner**

いちごコーナー

The Ichigo Corner is a place for readers to express their opinions on Seika, life in Japan, or anything else anyone wishes to say.

Submissions can be sent in either by mail or e-mail.

**Ichigo's Aim**

いちごの目的

Since the advent of Kansai Science City, the town of Seika, along with its foreign population, has been growing rapidly. In an effort to make the lives of foreign residents easier, the Seika Town Office produces this newsletter monthly. The newsletter's name, "Ichigo," means strawberry, Seika's most famous product.

かんさいぶんかがくじゆつけんきゆうとし けんせつ  
関西文化学術研究都市の建設  
すす せいにかちょう ひと ふ  
が進み、精華町にすむ人が増  
え、そのなか がいこくじん じんこう ふ  
え、その中で外国人の人口も増  
えています。せいにかちょうない す  
外国人の皆さんが暮らしやす  
いように、精華町は毎月この  
じょうほうし ほうこう  
情報紙を発行しています。この  
じょうほうし  
情報紙のニックネーム「いち  
ご」(いちご せいにかちょう いちばんゆうめい  
ご) (莓、精華町の一番有名な  
もの) は、みんながわかるよう  
にひらがなでつけました。

**Ichigo on the Internet**

<http://www-e.town.seika.kyoto.jp/html/english.html>