



## 目次 :

CHILDREN OF THE WORLD MEETING	1
HOUSONO STATION MOTORBIKE PARKING	1
PAPER RECYCLE: CAN I THROW THIS AWAY?	2
QUICK LIST	2
THIS MONTH'S EVENTS	3
EMERGENCY MEDICAL	4
LETTER FROM THE EDITOR	4
FACEBOOK AND WEBSITE INFO	4

## Children of the World Meeting

**Time:** June 14th (Sun) 2 PM - 4 PM

**Place:** Seika Exchange Hall (Town Hall 2nd Floor)

**Limit:** 50 People

**Details:** Learn about, and learn to write your name in other writing styles like Indian (Devanagari), Korean (Hangul), Cambodian (Khmer), and Thai through various games. Whether your native language uses the alphabet or not, come have fun with other residents of Seika while learning about the various writing systems of the world!

**Application Method:** By June 6th send your [ Address, Name, Age (School Year), and Phone Number] to the Fax or Email listed below.

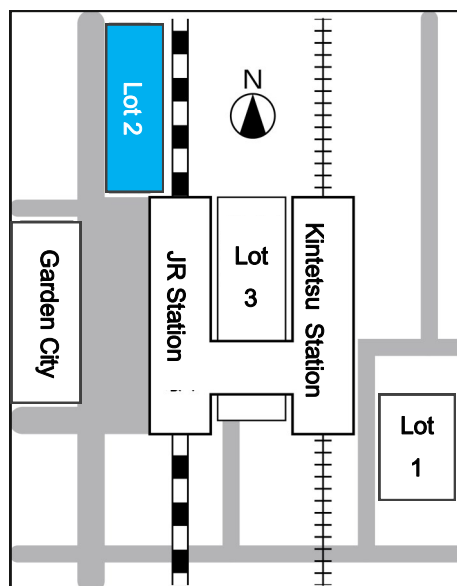
**Sponsor:** The Town of Seika, Seika Global Network

**Contact:** Seika Global Network Representative: Kitano

TEL/FAX: 72-5896

Email: [seika-global-net-info@zeus.eonet.ne.jp](mailto:seika-global-net-info@zeus.eonet.ne.jp)

## Hosono Station Motorbike Parking Restricted to West Side



As of the 25th of May, parking scooters and motorbikes will be limited to Parking Lot Number 2.

Parking Lots Number 1 and 3 will be limited to bicycles only. In both lots, scooter and motorbikes that are still there after the 25th will first receive warnings and then be removed from the lot, so please do not leave them there.

**Questions:** General Affairs Division  
Patrol and Traffic Administration

TEL: 0774-95-1910

## HEADLINE :

- Scooter and Bike Parking at Hosono Station Changes on the 25th
- A new category was added to recyclable paper.



## PAPER RECYCLE: CAN I THROW THIS AWAY?

Starting in April this year, the category “Other Recyclable Paper” was added to the types of paper picked up by the town and local recycling programs alongside newspaper, magazines, cardboard, and paper packs to define other types of recyclable paper.

These types of paper were, up until now, required to be placed inside magazines before being thrown away.

Just one or two of these types of paper would be fairly small, but due to the large variety and frequency that they are thrown away, it is can be predicted that a large amount gets collected on a regular basis. Rather than handling it like “garbage”, it should be collected like recyclable paper as a “resource” instead.

### How to Throw it Out

Envelopes, letters, fliers, catalogs, tissue boxes, notebooks, copy paper, calendars, memo pads, and toilet paper rolls should either be inserted into magazines and thrown out or placed in a paper bag and thrown out. When throwing them away in a paper bag, tie it closed using plastic thread or twine to prevent the contents from being blown away.

- ◆ **Envelopes** - For envelopes with a window, please remove the cellophane portion.
- ◆ **Postcards** - Postcards with a vinyl side (the shiny, smooth part), cannot be recycled. Please remove personal information before recycling non-vinyl cards.
- ◆ **Tissue Boxes** - Please remove the plastic around the opening before recycling.
- ◆ **Calendars** - Remove any metal, vinyl, or plastic before recycling the paper portion.
- ◆ **Notebooks and Memo Pads** - Remove any metal, vinyl or plastic before recycling the paper portion.

### Things that Cannot Be Thrown Out

If items that cannot be used to make paper are mixed in with the recyclable paper, they can obstruct the recycling process. Even paper that, at first glance appears recyclable, is sometimes unsuitable for recycling purposes. Please leave out the following items and throw them away with burnable garbage instead.

◇Vinyl-coated Paper ◇Pictures ◇Waterproof paper ◇Thermal paper ◇Carbon paper ◇Carbonless copy paper ◇Adhesive tape ◇Badges

◇Cellophane ◇Aluminum covers on yogurt cups and other products and vinyl coated products ◇Soap wrappers, laundry detergent or fragrance paper boxes and any scented paper ◇Any paper with designs on it that is heated up to print on cloth and fabric.

Paper that tears easily or paper with visible vinyl where it is split or torn should be thought of as vinyl processed paper and cannot be recycled. In this case, throw it away with the burnable trash.

If you mix everything together it just becomes “trash”, but if you properly separate it, it becomes a viable resource that can be reused again. Please make it a custom to always check to see if what you are throwing away can be considered “Other Recyclable Paper” before throwing it away.

## QUICK LIST

Hello and welcome to the Quick List! Each week we will present a short list of vocabulary that you can quickly put to use in daily life.

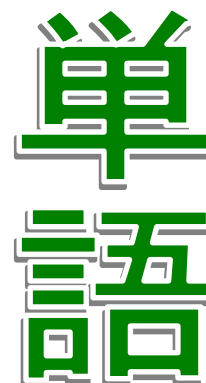
This week's theme is: **The Rainy Season**

Next Week's Theme: **Summer!**

Please send me feedback! Is this list at a good level? Too hard? Too easy? Also, if you have topic suggestions please tell me what you want to learn!

### Quick List - Restaurants

1. 梅雨 — つゆ — Rainy Season
2. 雨 — あめ — rain
3. 蒸し暑い — むしあつい — Hot and Humid
4. カビ — mold
5. 生える — はえる — to grow (mold)
6. 湿度 — しつど — humidity
7. 梅雨明け — つゆあけ — the end of rainy season





## THIS MONTH'S EVENTS

Day	Time	Details	Place
14(Thu)	16:00-17:15	Disabled Persons Craft Market	Library Exchange Space (Town Hall 2nd Fl.)
15(Fri)	9:00 -15:00	Iki Iki Health Walk	Kasuga Mountain Primeval Forest
22(Fri)	9:00 - 12:00	21st Seika Small Trip	In Town
	10:30-12:00	Smart City Expo Lecture in Keihanna	Keihanna Plaza "Nile" Meeting Room (3rd Fl.)

Mukunoki Center		
Day	Time	Details
10 (Sun)	9:00-	Sports Festival
13 (Wed)	15:00-17:00	Open Arena (Table Tennis)
17 (Sun)	-	Sports Festival
20 (Wed)	15:00 -17:00	Open Arena (Table Tennis)
24 (Sun)	9:00 - 12:00	Smile Sports Arena
27 (Wed)	-	Mukunoki Center Closed
6/3 (Wed)	15:00 - 17:00	Open Arena (Table Tennis)

Health Center		
Day	Time	Details
1(Fri)	13:30-	3.5 Yr-Old Checkup
7 (Thu)	13:00-	2 Yr-Old Dental Checkup
8 (Fri)	13:00-	1.5 Yr-Old Checkup
12 (Tue)	13:00-	9 ~ 10 Month-Old Checkup
19 (Tue)	13:00-	3 ~ 4 Month-Old Checkup
31 (Sun)	9:30-12:00	Papa Mama Classroom
		Parent Edition

## KEIHANNA MEMORIAL PARK EVENTS

### 5th Tohoku Earthquake Charity Market@Rainbowmaman

Date: May 17th (Sun), 10 AM to 4 PM

(Canceled if Weather Alert is announced)

Place: Shibafu Park

Details: Handcraft and Music Charity Market. ※ For more info check out Rainbowmaman (Email: Rainbowmaman@gmail.com).

### Starry Sky Cafe

Date: May 23rd (Sat), 30th (Sat) 7 PM to 8:30 PM.

Place: Suikeien

Details: Enjoy viewing astronomical observations. ※No food or drinks will be served

Price: Adults 300 Yen, Elementary and Middle School Students 150 Yen

### An Evening with Fireflies

Date: May 28th (Thu), June 4th (Thu) and 11th (Thu) 7:30 PM to 9 PM

Place: Suikeien

Details: Relax and enjoy the light of fireflies. It also comes with a catered lunchbox

Price: 2500 Yen

### Keihanna Plaza Small Concert

In the Atrium Lobby

Dates: 1) 5/13 (Wed), 2) 5/27 (Wed)  
3) 6/3 (Wed)

Time: 12:15 PM - 12:45 PM

Songs: 1) F&K Doppler "Rigoletto Fantaisie" (Piano)

2) Yamda Kousaku "This Road",  
Motzard "Voi che sapete" from  
'The Marriage of Figaro"  
(Soprano, Piano)

3) Schumann "Fantasie in C" (Piano)

Contact: Keihanna Plaza Puchi Concert  
Committee TEL: 0774-95-6128



SEIKA TOWN OFFICE  
PLANNING AND  
COORDINATION DIVISION

Kyoto-fu, Sōraku-gun, Seika-cho

Minami-Inayazuma, Kitajiri 70

TEL: 0 7 7 4-95-1 9 0 0

FAX: 0 7 7 4-9 5-3 9 7 1

EMAIL [cir@town.seika.kyoto.jp](mailto:cir@town.seika.kyoto.jp)



SŌRAKU EMERGENCY MEDICAL CLINIC SCHEDULE

Schedule for February and March (PD - Pediatrics, IM - Internal Medicine)

Date	Specialty	Date	Specialty
May 3rd (Hol/Sun)	IM	May 17th (Sun)	IM, PD
May 4th (Hol/Mon)	IM	May 24th (Sun)	IM, PD
May 5th (Hol/Tue)	IM	May 31st (Sun)	IM
May 6th (Hol/Wed)	IM	June 7th (Sun)	PD
May 10th (Sun)	IM	June 14th (Sun)	IM

Please call in advance to confirm.

QUESTIONS: Sōraku Emergency Medical Clinic (Sōraku Hall)

そうらくきゅうじつおうきゅうしんりょうじょ そうらくかいかんない

相楽休日応急診療所 (相楽会館内) TEL: 0774-73-9988

What to do if...

**You have a question about something in Ichigo:**

Call Jacob Biros, Coordinator for International Relations at the Seika Town Office. You may also call if you need an interpreter, as most of the events and classes in Ichigo will be in Japanese.

**You have a problem with life in Japan:**

If you have any questions or problems concerning life in Japan not related to an article in Ichigo, please contact Jacob Biros, Coordinator for International Relations at the Seika Town Office.

TEL : 0774-95-1900 FAX: 0774-95-3971 E-mail: [cir@town.seika.kyoto.jp](mailto:cir@town.seika.kyoto.jp) or [kikaku@town.seika.kyoto.jp](mailto:kikaku@town.seika.kyoto.jp) (Planning and Coordinating Division)

**You have an issue with your visa or other questions:**

The Kyōto City International Foundation (located at 2-1 Toriichō Awataguchi, Sakyō-ku, Kyōto-shi) , offers advice and consultation on visa issues and general problems. **Visa consultations are available on the 1<sup>st</sup> and 3<sup>rd</sup> Saturdays of every month (appointment required). Consultations can be done in English, Chinese, Korean, and Spanish.** General counseling is available Tuesday to Sunday from 9:00 to 21:00.

TEL: 075-752-3511 Homepage: <http://www.kcif.or.jp/en>

ONLINE INFO

Facebook



Town Website



LETTER FROM THE EDITOR

The cherry blossoms have now passed and the trees are all green again. As it gets warmer outside and starts to rain more frequently, make sure to start taking steps to prevent mold in your houses and apartments. Open your windows on sunny days, run your air conditioner on the "Dry" setting occasionally and pick up some dehumidifying products from a 100 yen store for your closets and dressers. It is better to prevent mold early than to find it later!

-Jake

Check out the Kyōto CIR blog: <http://tabunkakyoito.wordpress.com/>